



5 Ventry Close, Salisbury, Wiltshire, SP1 3ES

£545 PCM

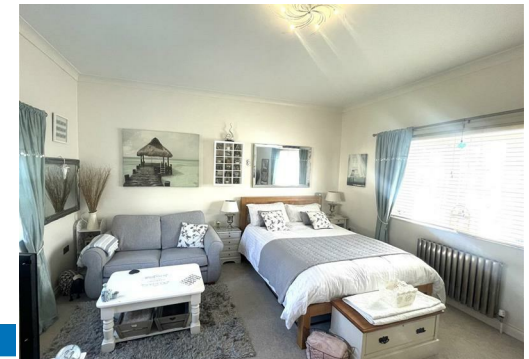
An opportunity to rent a beautifully presented and spacious fully furnished annexe on a MONDAY - FRIDAY basis, single occupancy only. Located on the edge of the City Centre, accessed via the Landlord's front door, you immediately enter your own door and staircase to the first floor. The light and spacious dual aspect room includes a kitchen area with grill/microwave, small fridge and sink, sofa, wardrobe and smart TV. There is a large fitted en suite shower room. The house is quietly tucked away at the end of a cul de sac with free parking which would be ideal for a professional requiring fully furnished accommodation for week days only. All bills with WiFi included.

## Ground Floor

Approx. 28.6 sq. metres (308.3 sq. feet)



Total area: approx. 28.6 sq. metres (308.3 sq. feet)



Energy Efficiency Rating		Current	Potential
Very energy efficient - lower running costs			
(92 plus) <b>A</b>			
(81-91) <b>B</b>			
(69-80) <b>C</b>			
(55-68) <b>D</b>			
(39-54) <b>E</b>			
(21-38) <b>F</b>			
(1-20) <b>G</b>			
Not energy efficient - higher running costs			
<b>England &amp; Wales</b>		EU Directive 2002/91/EC	

**WHITES**  
 Castle Chambers, 47 Castle Street,  
 Salisbury, Wiltshire, SP1 3SP  
 01722 336422  
[www.hwwhite.co.uk](http://www.hwwhite.co.uk)  
[residential-sales@hwwhite.co.uk](mailto:residential-sales@hwwhite.co.uk)

